

INSTALLATION GUIDE

Acura Integra Type S (2024+)

ROCK GUARDS



Before you start

Thank you for choosing **FX3D Design Rock Guards**.

This guide will walk you through the installation process step by step.

The installation is straightforward and requires **no drilling or permanent modification** to your vehicle.

Estimated installation time: 30–45 minutes

Difficulty level: Easy to moderate (basic hand tools required)

Tip: Take a few minutes to read the full guide before starting. It will make the installation smoother and faster.

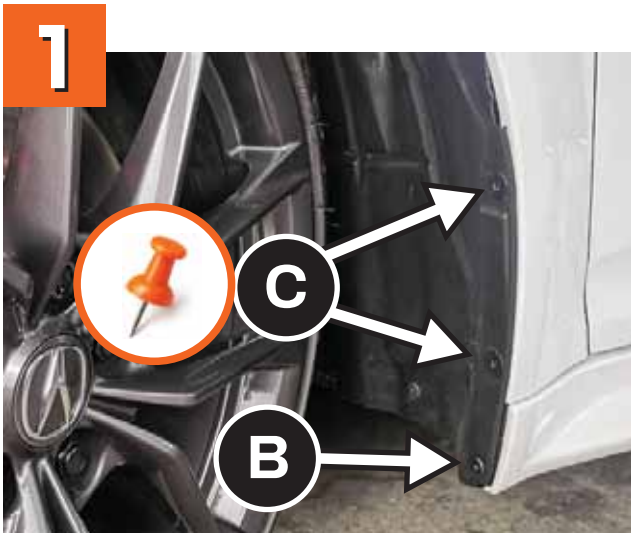
What's in the package

- A.** Front rock guard (x2)
- B.** Rear rock guard (x2)
- C.** 1/16" (1.75 mm) thick plastic washer (x12)
- D.** #12 x 13/16" (20 mm) Phillips Truss head screw (x4)
- E.** Push pin (x1)
- F.** 3/16" (4.5 mm) thick beveled plastic spacer (x4)
- G.** Rear bracket (x2)
- H.** *FX3D Design* screwdriver (x1)



Required tools

- Phillips screwdriver
- Push-type fastener removal tool or flat-head screwdriver
- Car Jack



Step 1 - Access the Fender Liner

- A.** Turn the front wheels as far as possible to gain access to the two factory fender liner fasteners and one Phillips screw.
- B.** Remove the lower factory Phillips screw using a Phillips screwdriver.
- C.** Using the provided push pin (E), poke a small pilot hole through the center of the two factory plastic fasteners.



Step 2 - Prepare the Front Rock Guard

- A.** Position the front rock guard with the FX3D logo facing the rear of the vehicle.
- B.** Place plastic washers (C) onto two provided screws (D) and onto the factory Phillips screw removed earlier.
- C.** Insert the provided screws (D) through the two upper slotted holes of the rock guard, and install the factory Phillips screw into the bottom hole. The screw heads should rest on the opposite side of the FX3D logo.
- D.** Place one plastic washer (C) on the upper screw so it sits between the rock guard and the fender liner.

3



Step 3 - Mount the Front Rock Guard

A. Install the supplied screws into the two factory plastic fasteners. The screws will thread directly into the OEM grommets.

Reinstall the factory Phillips screw in its original location.

Do not fully tighten the screws at this stage to allow for adjustment.

4



Step 4 - Final Adjustment

A. Move the rock guard side to side until the desired position is achieved.

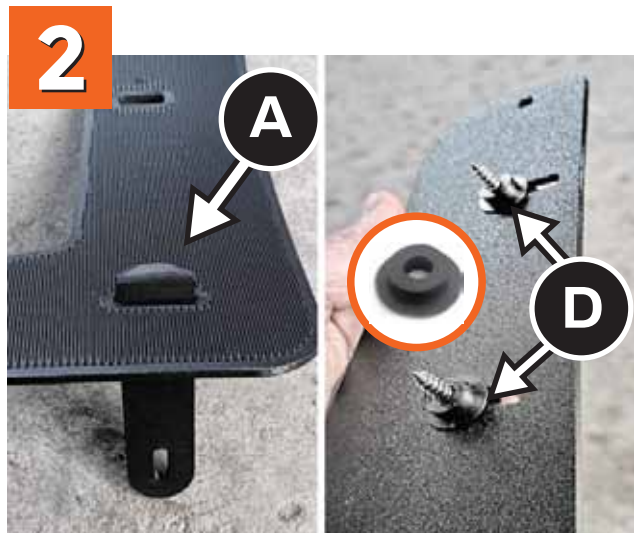
B. Once satisfied, tighten all three screws securely.

C. Repeat steps 1 through 4 on the opposite side of the vehicle.



Step 1 - Access the Rear Wheel Arch

- A.** Using a car jack, raise the rear of the vehicle to gain access to the rear wheel arch liner screws.
- B.** Remove the two factory screws securing the wheel arch liner. The supplied FX3D Design stubby screwdriver (H) is especially useful for this step.



Step 2 - Prepare the Rear Rock Guard

- A.** Position the rear rock guard with the FX3D logo facing the rear of the vehicle. From the back side of the rock guard (side without the logo), slide one rear bracket (G) through the bottom slotted hole.
- B.** Install plastic washers (C) onto the two factory screws removed in Step 1.
- C.** Insert the two factory screws through the upper slotted holes of the rock guard.
- D.** Install beveled spacers (F) onto the factory screws to act as spacers between the rock guard and the wheel arch liner. The larger diameter of each spacer must rest against the rock guard.

3



Step 3 - Final adjustment

- A.** Align the rock guard and screw the 2 factory screws into their respective positions. **Don't fully tighten** to allow for adjustment.
- B.** Move the rock guard from side to side until you are satisfied with its position.
- C.** Once you are done, you can fully tighten the 2 screws.

4



Step 4 - Install Lower Bracket

- A.** Remove the factory Phillips screw located underneath the bumper and align the bracket with the mounting hole.
- B.** Insert the factory screw through the slotted hole of the bracket and thread it back into the bumper.
- C.** Apply gentle pressure to the bracket so the rock guard sits flush with the bumper and fully tighten the screw.
- D.** Repeat steps 1 through 4 on the opposite side of the vehicle.

Your FX3D Design Rock Guards are now installed and ready to protect your vehicle!

Questions or need assistance?

Visit www.fx3ddesign.com or contact info@fx3ddesign.com